



WASHBURN RURAL HIGH SCHOOL

JUNIOR BLUES NEWSLETTER



FEATURED STORY

WRHS CAFETERIA

Before the first bell rings and students pour into Washburn Rural High School, the cafeteria is already buzzing with activity. Bright and early at 5:00 in the morning, Barb Alstrom arrives to kickstart the day, checking the temperatures in refrigerators and freezers, turning on equipment, and handling paperwork. She is joined by a dedicated team of about nine staff members who begin preparing breakfast and lunch, ensuring that everything runs smoothly for the hundreds of meals that they serve daily.

From the moment the doors open, the team works with precision and coordination. The smell of fresh-baked goods fill the air as breakfast is prepared for students needing an early meal.

TABLE OF CONTENTS

- Principal's Letter
- Counseling Office
- Care Closet
- After School Labs
- Drama Department
- Feature Story - Cafeteria
- Rural Rumble / Blues Brawl
- Hall of Fame Nominations
- World Language
- Career and Technical Education
- Common Grounds
- The Shack
- Coding Camp
- Yearbook
- Media Center
- WRHS Prom

From the Desk of Our Principal



Greetings!

For many years, there has been considerable talk about the importance of obtaining a high-quality education. Scarcely a day goes by that the enormous costs of failing to educate a learned citizenry are not mentioned and lamented in the news. The statistics are quite startling – consider these, for example. Nearly 75% of all inmates in State, and 59% of all inmates in Federal prison systems are high school drop outs. 23.5% of all unemployment recipients have not completed their high school education. Sadly, by the end of this day, 7,000 young people will have dropped out of high school across the country and, in doing so, severely limited their futures. It is, indeed, a bleak picture. So why is it, then, that “faceless”

statistics like these rarely mean much more to us than a sad epitaph on someone else’s personal history? Generally, it is because a vivid enough portrait has not been painted related to how such numbers impact us directly. Let me try to do that for you now. Consider the following table which illustrates the average lifetime earnings one can expect based on their level of educational attainment.

Education Level	Lifetime Weeks Worked	2022 Weekly Wage (Median)*	Estimated Lifetime Earnings
Less than a high school diploma	2080	\$708	\$1,472,640
High School Graduate	2080	\$899	\$1,869,920
Some College - No Degree	2080	\$992	\$2,063,360
Bachelor's Degree	2080	\$1,493	\$3,105,440
Professional Degree	2080	\$2,206	\$4,588,480

Source: Department of Labor, Bureau of Labor Statistics, 2023

Does this help to bring things into focus for you? I shared this information with our freshman at the beginning of the school year and I can assure you that some eyes were opened! The difference in earning power between a high school dropout and a college graduate is just over 1.6 million dollars* over a 40-year career. That is \$40,820 a year!

With so much of the future success of our young people hinging on obtaining a high school diploma, we take our responsibility to graduate every single student quite seriously at Washburn Rural. Not only does this imply assisting struggling students, but it also means making sure that our course offerings are cutting edge and of high interest to our student body.

We have instituted programming that is designed to achieve this end. We have a “freshman only” orientation day at the start of the school year. We implemented Advisory Periods to help students make stronger connections to staff and programming in the building, to grant greater access for assistance from teachers during the school day, and ultimately, to increase student success. As additional evidence of our commitment to students, the Renaissance Program was restructured to not only recognize outstanding academic achievement, but also to provide incentives for grade improvement and perfect attendance. Moreover, we continue to add new career pathways within our vocational departments that have resulted in excellent “real world” opportunities for our students.

From the Desk of Our Principal

For example, our Construction Science program provides students with the skills and technical expertise needed to be able to go to work directly out of high school if that is what they choose to do. Additionally, our award-winning coffee shop, "Common Grounds," is a student-run enterprise that equips students to manage their own businesses. From the "point of sale" system used to manage purchases, to the advertising and marketing of its products, all aspects of the operation are determined by our students.

Furthermore, the new CTE Innovation Center is now open and thriving, providing students with expanded opportunities in Career and Technical Education. This cutting-edge facility serves as the hub for our career pathways in Agriculture, Food & Natural Resources; Architecture & Construction; Arts; Bio-Medical; A/V & Communication; Hospitality & Tourism; and Information Technology. Designed to foster collaboration and creativity, the Innovation Center reflects the dynamic and innovative environments found in today's industries. Students are actively engaging in hands-on learning experiences that prepare them for success in high-demand careers, making the most of this exciting new addition to our district.

Finally, we are thrilled to host the International Baccalaureate and Advanced Placement Programs at Washburn Rural High School. For students seeking challenge, these rigorous options provide students with outstanding preparation for life after high school.

Whatever the future holds, rest assured that the staff at WRHS is committed to providing your child with an exceptional educational experience. Let us know how we can help!

Best,

A handwritten signature in black ink that reads "Ed Raines". The signature is fluid and cursive, with the first name "Ed" and the last name "Raines" clearly legible.

Ed Raines, Principal
raineedw@usd437.net



WRHS Counseling Office

[Counseling Website](#)

Crisis Hotline: 785-232-5005

Twitter Updates: @wrhsgo

Crisis Hotline: 785-232-5005

[Counseling Department Staff](#)

Summer Programs and Volunteer Opportunities

The WRHS counseling office publishes a [summer program](#) and [volunteer opportunity](#) resource document. We encourage families to explore these resources. If you have additional programs and volunteer resources, please contact fredema1@usd437.net.

College Visits

As families start to make summer plans, we encourage students to visit college campuses. This experience can help students set goals, make decisions, and understand the application process. Advice on planning a college visit can be found at <https://bigfuture.collegeboard.org/find-colleges/campus-visit-guide>.

College Entrance Exams

Both the ACT and SAT are admission exams; students in Kansas tend to take the ACT but both are accepted wherever admission exams are required.

The value of an ACT or SAT score has been in question for many years. Research indicates that GPA and rigor in high school are stronger indicators for success in college than admission exams. Before Covid, <https://www.fairtest.org/>, advocated for test optional policies and published lists of universities that did not require these exams for admission. After Covid and the cancellation of exams, the majority of US universities decided to not require ACT or SAT scores for admission; this includes Kansas universities. For the Class of 2026, some out of state colleges have decided to reimplement the requirement of the ACT or SAT while many have decided to continue with not requiring a test score. Policies are constantly changing and students need to check with their college for the most up to date information.

While the ACT or SAT score may not be needed to be admitted in Kansas and many others, the exam results remain a crucial factor in awarding scholarships at many public universities. In Kansas, the ACT or SAT was not required for scholarship at KU or Washburn for the Class of 2025. The other state colleges required an ACT or SAT score to award scholarships for the Class of 2025; we do not know yet if those policies will change for the Class of 2026. We encourage students to research their potential college options and decide whether taking or retaking the ACT or SAT is needed.

ACT preparation materials can be found at

<https://www.act.org/content/act/en/products-and-services/the-act/test-preparation.html>.

IB and AP Exams

We wish our students taking IB and AP exams well! As you prepare for exams, we encourage you to set goals for yourself. In Kansas, colleges are required to award credit for 4/7 on IB and 3/5 on AP (except AP physics and AP art history that require 4s). <https://www.kansasregents.org/students/credit-for-prior-learning/ap-clep-ib>. To view specific university policies for IB and AP, search the university name plus IB or AP credit.

◆ WRHS Counseling Office

Sample policies are below:

K-State: <https://www.k-state.edu/admissions/undergrad/manhattan/apply/policies-requirements/advanced-standing-credit/advanced-test-credit.html>

KU: <https://admissions.ku.edu/apply/credit-transfer/high-school>

Washburn: <https://www.washburn.edu/academics/prior-learning-assessment/index.html>

Wichita State: <https://www.wichita.edu/services/registrar/priorlearning/index.php>

Schedules

The pre-enrollment for the 2025-26 school year is complete. Tentative schedules will be available in July. Schedule adjustments can be requested during walk-in registration. Please note that school counselors are not available during the summer to make schedule changes.

Finals Study Tips

This Fastweb article lists several tips for students as they prepare for their final exams in May:

<https://www.fastweb.com/student-life/articles/the-20-study-tips-for-finals>

Local Mental Health Services

 <p>Lilac Center</p>	<p>Lilac Center 3630 SW Burlingame Rd. Topeka, KS 66611</p>	<p>https://www.lilaccenter.org/</p> 	<p>785-337-0308</p>
 <p>FAMILY SERVICE & GUIDANCE CENTER</p>	<p>Family Service and Guidance Center 325 S.W. Frazier Ave. Topeka, KS 66606</p>	<p>https://www.fsgctopeka.com/</p> 	<p>FSGC Crisis Services 24 hours a day/7 days a week</p> <p>785-232-5005</p>
	<p>Stormont Vail Behavioral Health Outpatient Services 3707 SW 6th Ave, Topeka, KS 66606</p>	<p>https://www.stormontvail.org/primary-care/behavioral-health-outpatient/</p> 	<p>785 270-4600</p>
	<p>Florence Crittenton 5423 SW 7th Street Topeka, KS 66606</p>	<p>https://flocritkansas.org/programs/outpatient-treatment/</p> 	<p>785-233-0516</p>
	<p>Washburn University Child & Adolescent Clinic 1700 SW College Ave. Topeka, KS 66621</p>	<p>https://www.washburn.edu/academics/college-schools/arts-sciences/psychology/psychological-clinic/Clinic-Child.html</p> 	<p>785-670-1750</p>

Washburn Rural High School Care Closet

Your counselor can help with:



Coats,
Shoes,
Clothing



Hygiene Products
Like Deodorant,
Soap, Toothbrush,
Femine Products



Food Supplies
& Free/Reduced
Lunch Forms

WRHS
Counselors



SCAN ME

Reach out for items
included or any other
hardship you need help
navigating

Cost
for
exams
like
PSAT
or ACT



Free Academic Assistance

AFTER SCHOOL LABS

Library

- **English**
- **Math**
- **Science**
- **Social Studies**

Room E554

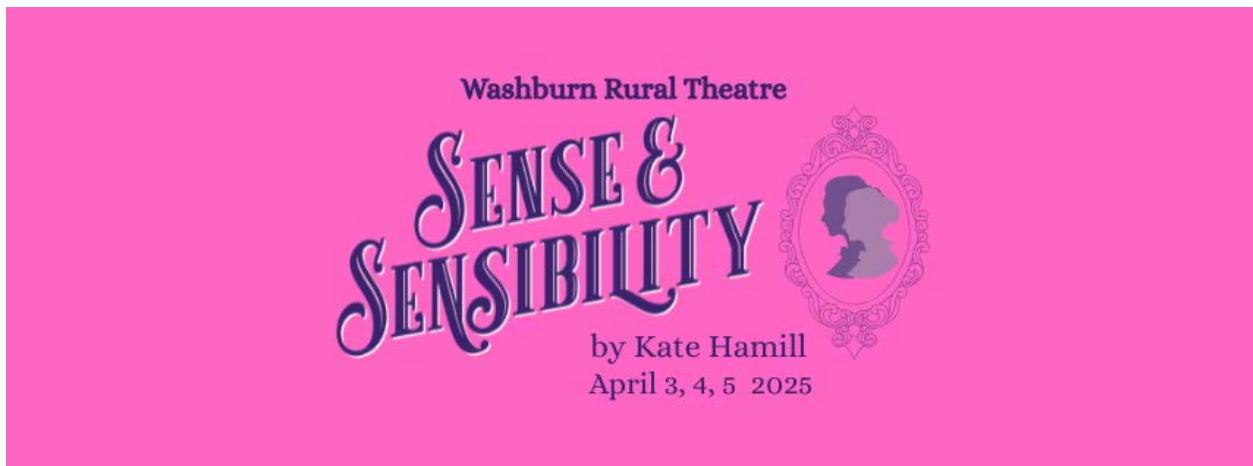
- **AF-JROTC**

Tuesdays & Thursdays 3:05-4:15pm

Need a ride home?

**Sign-Up in the Main Office for Transportation
Before or during lunch**

◆ Drama Department



Spring Play - *Sense & Sensibility*
April 3, 4, 5
7:00 p.m.

Fast-paced and hilarious, join us for a modern take of the classic Jane Austen romantic novel, *Sense and Sensibility*.

Written by Kate Hamill this playful adaptation of Jane Austen's beloved novel follows the fortunes (and misfortunes) of the Dashwood sisters—sensible Elinor and hypersensitive Marianne—after their father's sudden death leaves them financially destitute and socially vulnerable.

Set in gossipy late 18th-century England, with a fresh female voice, the play is full of humor, emotional depth, and bold theatricality. *SENSE AND SENSIBILITY* examines our reactions, both reasonable and ridiculous, to societal pressures. When reputation is everything, how do you follow your heart?

General Admission tickets are available at WaRuTheatre.org, Washburn Rural's GoFan page, and with cash at the door before each show.

Cast

ELINOR DASHWOOD - Jocelyn Escalante
MARIANNE DASHWOOD - Tillie McIlvain
MARGARET DASHWOOD - Anna Fowler
MRS DASHWOOD - Liana Murphy
EDWARD FERRARS - Max McKibben
COLONEL BRANDON - Aiden Olson
JOHN WILLOUGHBY - Beckham Carr
SIR JOHN MIDDLETON - Eli Loyd
MRS JENNINGS - Elery Snethen
GOSSIP 1/FANNY/MRS FERRARS - Ren Beard-Alvarado

Drama Department

GOSSIP 2/ANNE STEELE - Caitlyn Al-Murrani
GOSSIP 3/ROBERT FERRARS - Milo Douglas
GOSSIP 4/DOCTOR - Corrinne Fullmer
GOSSIP 5/LADY MIDDLETON - Annie Lightcap
GOSSIP 6/ LUCY STEELE - Keyrsten Glotzbach
GOSSIP 7/JOHN DASHWOOD - Victor Hawkinson-Penny
GOSSIP 8/THOMAS - Ashton Antrim

Crew

Costumes - Savannah Manrose, Rain Gonzalez, Olivia Zeyer, Maddy Bauer
Make-Up - Holly Sorrenti, Jess Cooper, Madi Garrouette, Chloe Kester
Grips/Shift - Nate Macha, Addi Hummell, Kylie Kirk, Cedric Goetz, Carter Coleman, Enzo Cabrillo, John Kirsch, Macey Cartwright, Austin Casebeer
Props - Austin Casebeer (Props Chief), Stagecraft Classes
Sound Board Operator - Owen Trambley
Publicity - Anna Fowler, Weston Widman
Lights - Gabe Fawl
Spots - Anna Johnston, Jessie Guay
Lobby Display - Tillie McIlvain & Stagecraft
Set Construction - Stagecraft and Advanced Stagecraft Classes

Production Staff

Director - Paige Bernick
Scenic Designer & Technical Director - Nick Beasley
Choreographer - Haley Reiff
Costume Designer and Supervisor - Cassie Hermes
Lighting Designer - Gabe Fawl
Make-Up Designer - Holly Sorrenti
Sound Designer - Owen Trambley
House Manager - Ryan J. McCoy, Eve Luea, Jaiden Loreman
Stage Manager - Kait Hartz
Assistant Stage Manager - Jacob Lawhon
Poster Design - Anna Fowler

◆ Feature Story

A Day in the Life of a Cafeteria Worker at Washburn Rural High School



Before the first bell rings and students pour into Washburn Rural High School, the cafeteria is already buzzing with activity. Bright and early at 5:00 in the morning, Barb Alstrom arrives to kickstart the day, checking the temperatures in refrigerators and freezers, turning on equipment, and handling paperwork. She is joined by a dedicated team of about nine staff members who begin preparing breakfast and lunch, ensuring that everything runs smoothly for the hundreds of meals that they serve daily.

From the moment the doors open, the team works with precision and coordination. The smell of fresh-baked goods fill the air as breakfast is prepared for students needing an early meal. The kitchen hums with activity as ingredients are measured, mixed, and cooked with care. Every station has its purpose, from chopping vegetables to preparing proteins. Ensuring each meal meets USDA nutritional guidelines.

By lunchtime, the cafeteria reaches its peak, with around 14 staff members working tirelessly to serve students efficiently. The district serves approximately 4,500 meals every day, making lunch the busiest time. Food is prepared throughout the day in a well-coordinated effort to keep up with the demand. Each meal is carefully portioned to meet nutritional standards while still being flavorful and satisfying. The cafeteria has learned to balance efficiency with quality, ensuring that students receive fresh meals without long wait times. Despite occasional staffing challenges, the team finds joy in their work and the camaraderie they share.



Behind the Scenes of Meal Preparation



Planning meals isn't a last-minute decision; instead, menus are prepared nine weeks in advance. They rely on student input concerning what food they put on the menu. They can make a great variety of items. Please feel free to provide information to the food service staff on what you would like them to serve. Though not everything can be made from scratch, a surprising amount of food is prepared fresh. The cafeteria boasts an impressive stock of spices and at times, receives deliveries of 376 cases of food twice a week, requiring two hours to unload. Teamwork is crucial during these deliveries, as staff members organize and store supplies quickly to maintain food safety standards.

Safety and cleanliness are top priorities, with the staff having to be trained according to Kansas state regulations. Each meal must meet strict USDA nutritional guidelines, focusing on whole grains, low-fat and sodium content, and limited added sugars. The cafeteria team takes pride in crafting meals with unprocessed ingredients—hamburgers are made from raw beef, chicken is cooked fresh for wraps, and sandwich meats are sliced in-house, just like at a deli. Even pasta dishes and some bread are made from scratch, with hopes of expanding their baking program in the future.

◆ Feature Story

Some of the hardest and most time-consuming meals to prepare include the Thanksgiving and Winter Holiday meals, which require extra planning and preparation to serve students a special feast. The team works tirelessly to prepare these meals, knowing that these occasions bring joy and comfort to the student body.

The Heart of the Cafeteria

For many staff members, the most rewarding part of the job is interacting with students. Whether it's greeting them with a warm smile, accommodating dietary restrictions with a specialized meal plan, or even breaking up the occasional rowdy moment, the cafeteria workers strive to make the lunchroom a welcoming place. Popular meals among students include chicken nachos and crispitos, while the most sold item in the Ala Cart section is drinks. Exciting new additions—ice cream and slushy machines—are on the way!

Keeping a positive attitude is essential in such a fast-paced environment. Barb and her team rely on music and even dancing to keep spirits high. There's a sense of family among the staff, and humor is often used to ease the stress of busy shifts. While staffing remains a challenge, the sense of purpose they find in providing nutritious meals makes it all worthwhile. As Food Service Director Stan Vallis puts it, "The student relationship with food service is phenomenal. The good quality food, the care we put into it—it's rewarding to come in and make meals for our amazing students".

More Than Just a Job

Many cafeteria staff members come from restaurant backgrounds, drawn to the school setting for its predictable hours and sense of community. Unlike the demanding schedules of restaurant work, cafeteria staff take advantage of a more balanced life, with workdays ending around 1:30 or 2:00 in the afternoon, leaving time for family and personal pursuits. While no formal degree is required, every staff member undergoes rigorous food safety training through the state of Kansas to uphold the highest cleanliness standards.

If there's one wish among the staff, it's for a bigger cafeteria to better serve the students. But despite space limitations, they take immense pride in their work, knowing that their efforts directly impact student health and well-being. Each meal served is more than just food—it's fuel for learning, a moment of connection, and a small act of care.



For students looking to be part of this incredible team, there's an opportunity to work in the cafeteria during open hours. Those interested can visit their guidance counselor to learn more. Because in the end, the cafeteria is about more than meals—it's about people, the community, and about making sure every student who walks through those doors feels seen, nourished, and valued, one plate at a time.

RURAL RUMBLE

a powderpuff event

May 3, 2025 from 1:30 to 4:00

WRHS Bowen-Glaze Stadium

INFO FOR SIGNUPS

*** SIGN UP BY April 9th ***



- **7-11 female students per team**
 - **\$10 per person** (each participant will receive a shirt)
-
- Team coaches must sign up individually and know their team (2 per team max; male or female)
 - Sign up on the google form (individually)
 - QR code or find us on **Instagram @waru_stuco**
 - Payments are due individually to C525 by Friday April 11th using the printable form
 - Rules + Game details can be found on sign up form
 - Spectators: \$2 to get in, do not need to fill out permission slip
 - Activity passes not allowed
 - Can be anyone, parents, staff, students



Sponsored by WRHS Student Council



BLUES BRAWL

a powderpuff event

May 3, 2025 from 9:30 to 12:00

WRHS Activity Center

INFO FOR SIGNUPS

*** SIGN UP BY April 9th ***



- **6-10 male students per team**
 - **\$10 per person** (each participant will receive a shirt)
-
- Team coaches must sign up individually and know their team (2 per team max; male or female)
 - Sign up on the google form (individually)
 - QR code or find us on **Instagram @waru_stuco**
 - Payments are due individually to C525 by Friday April 11th using the printable form
 - Rules + Game details can be found on sign up form
 - Spectators: \$2 to get in, do not need to fill out permission slip
 - Activity passes not allowed
 - Can be anyone, parents, staff, students



Sponsored by WRHS Student Council



NOMINATE YOUR **WRHS** HALL OF FAME CANDIDATES NOW!



Nominations for the Hall of Fame are accepted year round, but need to be submitted by April 15th to be considered for the 2026 induction.



- **STAFF**
- **ALUMN**
- **TEAMS**



<https://usd437.net/wrhs/hall-of-fame>

Criteria necessary for recognition and nomination forms can be found directly on the District website.

The Hall of Fame Ceremony is proudly sponsored by the WRHS Student Council.



◆ World Language

In our Spanish classes, we have just finished the "Locura de Marzo", a musical competition with music from all around the Spanish-speaking world. Locura de Marzo, which translates to "March Madness" in Spanish, is a musical tournament, similar to the NCAA basketball tournament, where students in Spanish classes vote for their favorite Spanish songs in a bracket-style competition, promoting cultural engagement and language learning. While listening to the music in Spanish, students gained an appreciation for various genres of music from around the world.

In Mrs. Janca's Honors Spanish 3 and Honors Spanish 4 classes, in Mr. Tenny's Spanish 2 classes and in Ms. Copple's Accelerated Spanish classes, "Candela" by Álvaro Soler and Nico Santos was the winner, as it was in the National Competition.

In Mr. Tenny's IB Spanish classes, the winner was "Igual que un ángel" by Kali Uchis and Peso Pluma.

In Mrs. Beard's French classes their competition is still on-going. They are through round one and round 2 started March 26th. Competition ends April 8. Over 2 million votes were cast during round 1 (all 16 songs on the bracket totaled). Manie Musicale is an annual bracket-style competition for students and teachers of French. Similar to March Madness basketball in the United States, participants try to predict which of 16 francophone songs will be the most popular. Once the tournament starts, voters decide which song will advance to the next round until we have a champion. The best part? Students learn French while having fun with students from all over the world. There are 7,068 schools participating which translates to 864,929 students!

Ms. Barber's German classes competed in "März Musik Manie" as well and the competition ended on March 31st. It is an international bracket again this year with over 350 schools participating! The final round is happening now and it is between "Manchmal so, manchmal so" from Ethiopian born Austrian singer BAC and "Daheim" from the German duo Blumengarten. This year's beloved "Ich haben einen kleinen Papagei" lost out in round 2 causing a lot of brackets to fall apart, but there are still many students with a chance to have their favorite song win! If you are interested in German music, stop by Frau Barber's room (C525) to check out the bracket and use the QR codes to explore music!



In April, Spanish and German students will be taking the AAPPL language test to determine their levels of proficiency in their language of study in listening, speaking, reading and writing. We are hoping that the students will demonstrate a high enough proficiency that they will earn the Kansas Seal of Biliteracy which lets employers and academic institutions know that they are proficient in English and in their second language.

◆ Career and Technical Education

Students' experience company tours and career presentations

During the month of March, the Manufacturing, Construction, and Agriculture students were able to gain knowledge about careers by participating in presentations from guest speakers: Caterpillar, HME, and a company tour of HME.



Airgas and HME were on site last week for special deliveries for our Manufacturing program. We truly appreciate your willingness to assist and your commitment to supporting our program. Your expertise and knowledge of what our students need to experience not only enables us to move forward with confidence but also strengthens the partnership between our organizations. Thank you once again for your invaluable support. We look forward to continuing our collaboration and achieving great things together.



◆ Career and Technical Education

Culinary Arts

Ms. Dible's students were completing a unit on fire safety. Guest speaker Tom Rodman-Mission Township Fire Department, 30 plus years of experience in Fire Service/EMT, provided a presentation to the Culinary Arts classes.

When we are covering safety in the kitchen before beginning labs, Ms. Dible tries to bring in the fire department and health inspector to talk about kitchen safety/food safety. Most house fires begin in the kitchen and can be prevented. Ms. Dible talks about what we need to do to prevent fires from happening (stay attentive, do not leave things cooking, pay attention to cooking times/temperatures, etc.). The fire department expands and enhances what we cover in class, along with talking about careers, personal experiences, and training opportunities (summer programs and camps).

Also, students had just finished a unit on stocks/soups for Culinary Arts. Each student had to develop their own Ramen Bowl...starting with 2 packages of Ramen each. Most created their broth, while others opted for the assistance of the seasoning packet. They also planned out their additional add-ins, such as shrimp, eggs, fresh herbs, and vegetables. We had 3 rounds of 6 to 7 students compete. The top 2 scores from each round advanced to the finals.

Ramen Challenge...
Kayauna Wallace
Ty Shinn
Ashton Simmons
Mackenzie East
Camden Chapman
Parker Trickey



Here are the top 3 competitors, with Ashton Simmons taking home top honors.

Workplace Experience/Internships

Washburn Rural offers workplace experience/internships in all 15 pathways. Students need to have taken two classes in the pathway they want to pursue. Have a genuine interest in a career associated with that pathway.

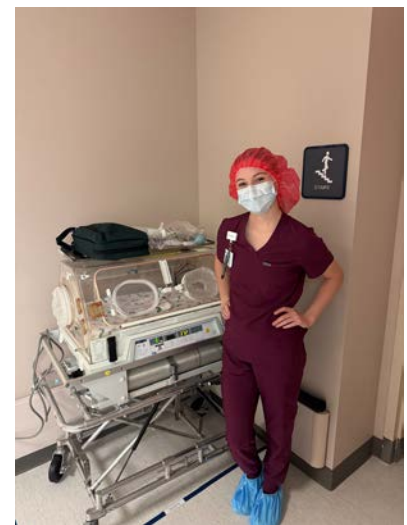
A workplace experience class can be incredibly important for several reasons, particularly for students or individuals entering the workforce. Here's why:

◆ Career and Technical Education

1. **Skill Development:** It helps participants develop critical skills like communication, problem-solving, teamwork, and time management in a real-world setting. These are often skills that can't be fully taught in a classroom but are essential in any job.
2. **Understanding Workplace Culture:** The class introduces participants to professional environments, teaching them about workplace etiquette, culture, and expectations. It helps bridge the gap between academic learning and the realities of the workplace.
3. **Networking Opportunities:** It offers a chance to build professional connections and network with people already working in the field. These relationships can lead to future job opportunities, mentorship, and guidance in one's career.
4. **Career Exploration:** The class provides exposure to different industries or job roles, helping participants decide which career path aligns with their interests and strengths.
5. **Resume Building:** Practical workplace experience is highly valued by employers. Having this experience on a resume makes individuals stand out when applying for jobs.
6. **Boosting Confidence:** It gives students or participants the confidence to navigate professional settings, interact with colleagues and managers, and handle tasks in a real job environment.
7. **Enhanced Job Readiness:** Participants leave the class with practical experience that can make them more competitive when entering the job market. It gives them a head start in understanding job responsibilities and workplace dynamics.

In short, a workplace experience class prepares individuals to successfully transition from education to the professional world, making them more effective and desirable candidates in the job market.

Below are a few photos of our spring workplace experience students. We appreciate our partnership with the community! Below are a few photos of our spring workplace experience students. We appreciate our partnership with the community!



◆ Career and Technical Education



Pictures from Vail, USD 437 Educators, Restore Physical Therapy, Rebound Physical Therapy, Bennington State Bank, Building Block, Boys & Girls Club, and Bettis Asphalt just to name a few.

For the 2025-26 school year, WRHS will be offering classes in the following Career Clusters and Pathways

- **Agriculture, Food & Natural Resources:** Animal Science, Health and Related Industries, Diversified Agricultural Science, Natural Resources & Environmental Sustainability and Plant Science & Industry Operations
- **Information Technology:** Media Design & Communications and Programming & Software Development
- **Business Finance:** Finance
- **Marketing:** Marketing
- **Manufacturing:** Manufacturing
- **Education & Training:** Teaching/Training
- **Health & BioSciences:** Biotechnology and Health Science
- **Law, Public Safety Corrections & Security:** Corrections, Security, Law & Law Enforcement
- **Architecture & Design:** Construction & Design
- **Hospitality & Tourism:** Restaurant & Event Management

Visit the CTE website for more information: WRHS.net/cte or WRHS counselor page -[WRHS Course Planning Guide](#)

Hello Spring Flavors

Available April - May

GRAND SLAM



Blue
Raspberry
Lemonade

PURPLE RAIN



Blue
Raspberry,
Strawberry,
Blackberry
Lemonade

TROPICAL SMOOTHIE



Strawberry,
Banana,
Mango
Smoothie

ARNIE BLUE



Half
Lemonade
Half Tea or
add a flavor!

Common Grounds



COMMON GROUNDS SENIOR SPOTLIGHT



Layla Collins

College attending:
Washburn University

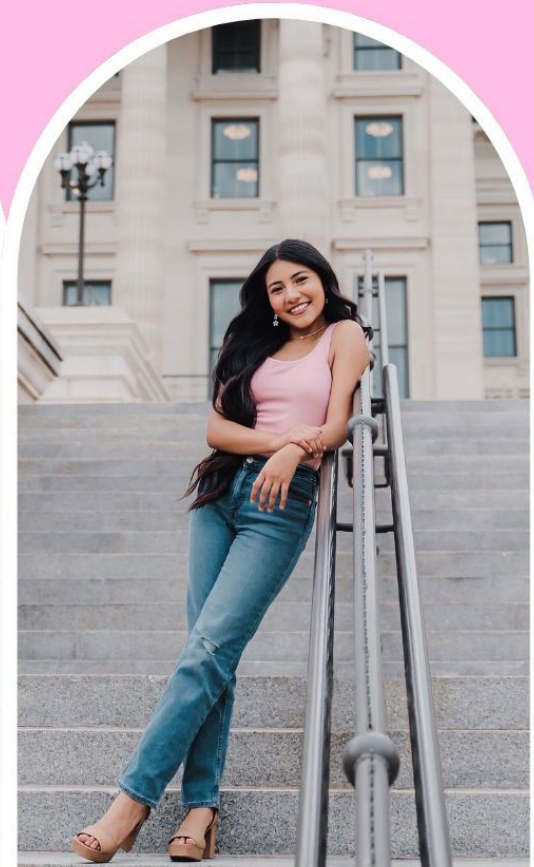
Intended major:
Accounting



Emerie Catlin

College attending:
Kansas University

Intended major:
Marketing



Evelyn Diaz-Reyes

Post High School Plans: Finish Drafting and Engineering Certification and volunteer for LCD.

THE SHACK

SENIOR SPOTLIGHT



REGAN HUGHES

YEARS OF EXPERIENCE: 2

INTENDED MAJOR: MARKETING

COLLEGE ATTENDING:

UNIVERSITY OF KANSAS



PAYTON FINK

YEARS OF EXPERIENCE: 2

INTENDED MAJOR: INTERIOR DESIGN

COLLEGE ATTENDING: KANSAS

STATE UNIVERSITY



CORA SABEL

YEARS OF EXPERIENCE: 3

INTENDED MAJOR: NURSING IN

ANESTHESIA

COLLEGE: UNIVERSITY OF KANSAS



MARIANNE CHRISTENSEN

YEARS OF EXPERIENCE: 2

INTENDED MAJOR: FINANCE

COLLEGE ATTENDING:

BRIGHAM YOUNG UNIVERSITY

WRHS

COMPUTER SCIENCE HONOR SOCIETY PRESENTS

SUMMER CODING CAMPS

GRADES K-3

JUNE 2ND - 5TH

8:00 AM - 10:00 AM

Students will learn the basics of computer science, participate in hands-on projects, use the Sphero Bolts, Cobo Block Robots, Cubelet Robots, and Edison Robots, discuss why technology is important, learn the difference between hardware and software, and more!

Early Registration - \$60 by April 4

Registration Cost - \$75 after April 4

GRADES 4-6

JUNE 2ND - 5TH

10:30 AM - 12:30 PM

Students will be introduced to block-based programming in Scratch to recreate popular games, learn how to use the Sphero Bolts, RVR+ Robots, and other robots to solve basic mazes, learn the Python programming basics, create their first coding project, and more!

Early Registration - \$60 by April 4

Registration Cost - \$75 after April 4

GRADES 7-9

JUNE 2ND - 5TH

1:30 PM - 3:30 PM

Students will discuss the basic needs to run and create programs, learn the basics of HTML, learn the basics of programming in Python and JavaScript, making projects and solving problems using code, understand and learn how to use IDEs, and more!

Early Registration - \$60 by April 4

Registration Cost - \$75 after April 4

REGISTER NOW



WRHS.NET/CSHS
(EVENTS TAB > CAMP)

EMAIL SCHMIHAL@USD437.NET IF YOU HAVE QUESTIONS



BUY YOUR YEARBOOK LIKE, NOW

YEARBOOKS ON SALE
ORDER TODAY

YEARBOOKORDERCENTER.COM

Keep your order number handy when you log on.

Washburn Rural High School

33333

Thank You

for supporting the

2025 Yearbook

GOLD LEVEL SUPPORTERS:

Chocolately Software

Laird Noller Ford

Platinum Realty

Plato's Closet

The Dance Factory

BLUE LEVEL SUPPORTERS:

Brad Noller - American Family Insurance

Chick-fil-A

Community Insurance Solutions, LLC

Eco Fresh Line Striping

Kansas Chamber

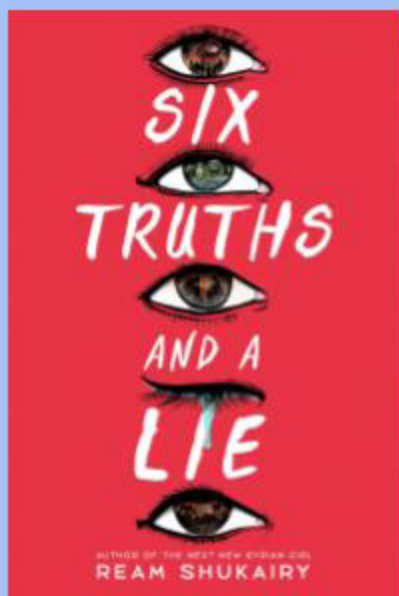
Keystone Mental Health

Midwest Health

Topeka Elite Cheer

Mrs. Finney's Monthly YA Book Recommendation

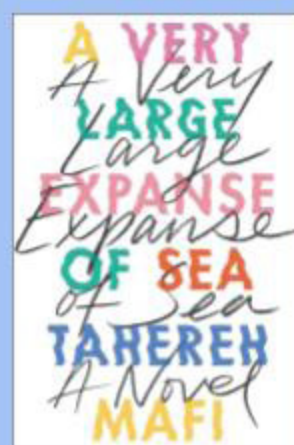
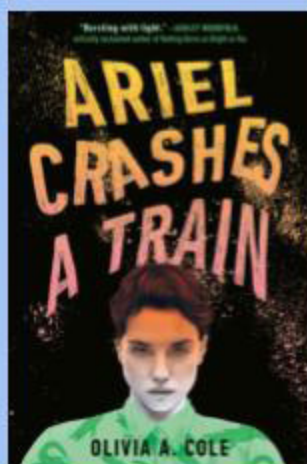
April 2025



Six Truths And A Lie
By Ream Shukairy
F SHU

A group of Muslim teenagers are trying to enjoy a fun night at the beach on the Fourth of July when an explosion goes off and levels an oil rig off the coast. Suddenly, each of them is now a suspect of a terrorist attack and being charged with murder. Is this a case of wrong place, wrong time, or is there more to this mystery than meets the eye?

Similar Titles Include:



Connect with us @wrhslib for:

- technology support
- homework help
- reading recommendations
- area job openings
- school activities and more



Visit the WRHS Library to place a hold on or check out one of these amazing books today!

Text 4 Help: 785-260-0015
Marcy Sandberg sandbmar@usd437.net
Victoria Finney finnevic@usd437.net



WRHSLib Bookmark Creation Contest

March 24th - April 14th 2025

The Bookmark Creation Contest is back! To participate:

- Starting Monday, March 24th, students & staff are invited to design an original bookmark using their own creative supplies or those provided by the library.
- Bookmarks must be submitted to the library by Friday, April 5th.
- Voting opens Monday, April 7th, and closes Friday, April 11th.
- Winners will be announced Monday April 14th, 2024.

Consider creativity, neatness, and message while designing your bookmark. Bookmarks will be on display (without names) in the library and voted on by WRHS students and staff. The top 3 winning bookmarks will be printed and distributed to students and staff checking out books in the library! All art mediums are accepted EXCEPT digital.



*Don't be late
for a very*

♠
IMPORTANT DATE

Join us for

WRHS Prom 2025

Through the looking glass

Saturday, April 12th, 2025

8:00pm to 11:00pm

Townsite Topeka
534, Kansas Ave
Topeka, Ks 66603

